

# Linking Health and Mapping

John Spencer  
MEASURE Evaluation  
Pre-CODIST Workshop  
April 27, 2009



*MEASURE Evaluation is funded by the U.S. Agency for International Development (USAID) through Cooperative Agreement GHA-A-00-08-00003-00 and is implemented by the Carolina Population Center at the University of North Carolina at Chapel Hill, in partnership With Futures Group International, John Snow, Inc., Macro International Inc., Management Sciences for Health, and Tulane University. The views expressed in this presentation do not necessarily reflect the views of USAID or the United States government.*







**USAID**  
FROM THE AMERICAN PEOPLE



**MEASURE**  
Evaluation



Bonne attention  
aux  
richesses et donne  
à tous accessibilité  
rigoureuse

PETITE  
SECTION  
- B

CONDOMS HERE





**USAID**  
FROM THE AMERICAN PEOPLE



# Data



**USAID**  
FROM THE AMERICAN PEOPLE

**MEASURE**  
Evaluation

# Where?



**USAID**  
FROM THE AMERICAN PEOPLE

**MEASURE**  
Evaluation

# Why?



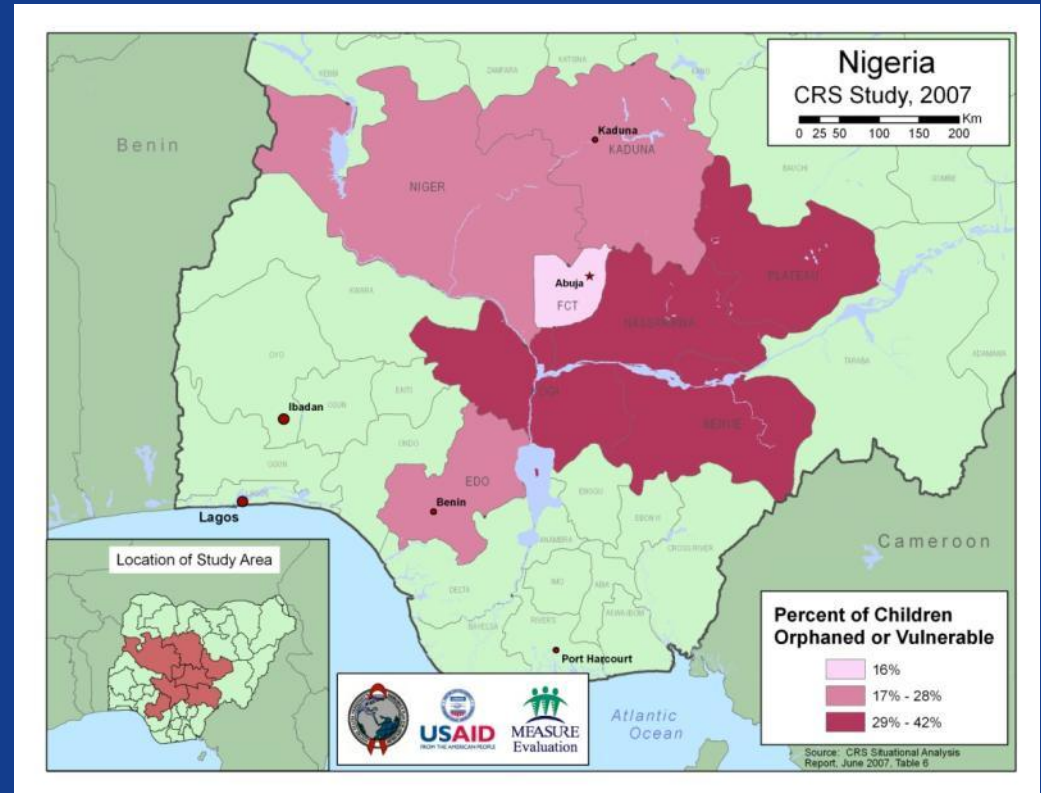
**USAID**  
FROM THE AMERICAN PEOPLE

**MEASURE**  
Evaluation



# Value of Mapping

- Provides insight into data
- Provides a way to link different data
- Can help improve data quality
- Picture worth 1,000 words



**USAID**  
FROM THE AMERICAN PEOPLE

**MEASURE**  
Evaluation

# Barriers to using GIS and mapping for health

- **Health**
  - Resource constraints
  - Data
  - Others (to be uncovered today)
- **National Mapping Agencies**
  - Demand in areas other than health
  - Resources
  - Others



# Spatial Data Infrastructure (SDI)

- Coordinated effort to develop spatial data for nation
  - GIS shapefiles
  - Human Capacity
  - Resources
- Health Sector has often been less prominent as other sectors (natural resources, utilities, other economic sectors)



# Health Sector Data Can Fit into SDI

- Regular reporting of health data at different levels used for program planning and decision making

- Number receiving services
- Service Sites
- Variety of conditions
  - HIV/AIDS
  - Vaccinations
  - Malaria
  - Other acute conditions
  - Routine Care
- Services Available
- People in need
- Supplies

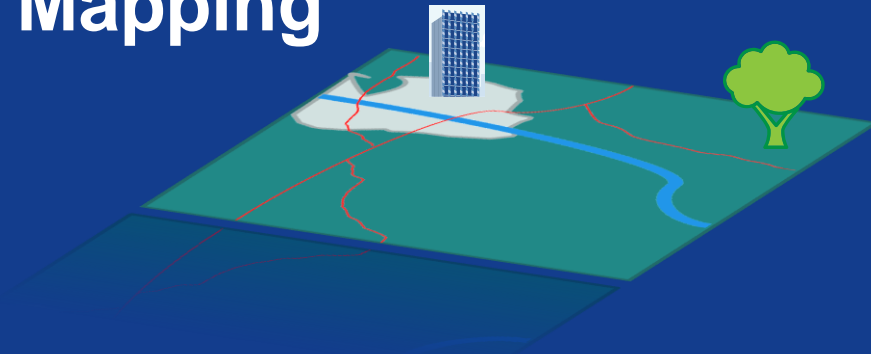


# Health and Mapping Sector Match

## Health

- Who needs care?
- What care is being given?

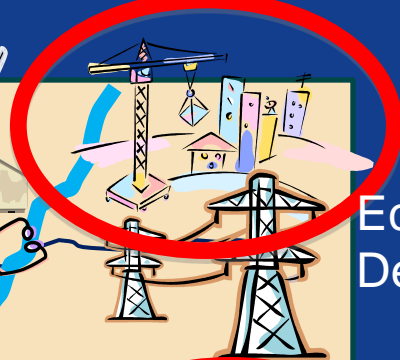
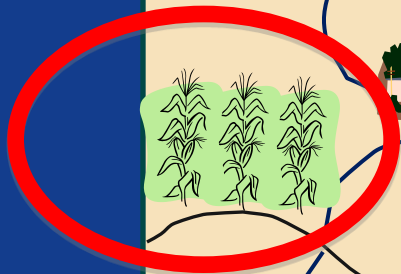
## Mapping



- Where infrastructure, people, natural features are



Agriculture



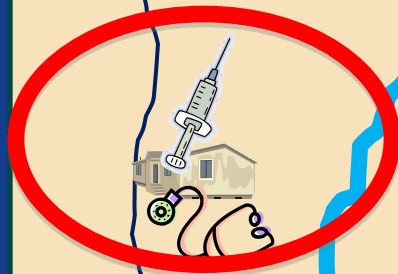
Economic  
Development



Natural  
Resources



Health Post



**USAID**  
FROM THE AMERICAN PEOPLE

**MEASURE**  
Evaluation

# Objective of Workshop

- Are there opportunities for mapping and health sectors to work together?
- What are the challenges that keep this from happening?
- What are the resources in the country that could help with mapping in the health sector?



# Goal

- Build linkages between Mapping Agencies and Health Sector
- Identify challenges for effective use of data
- Start a discussion that can continue back home



