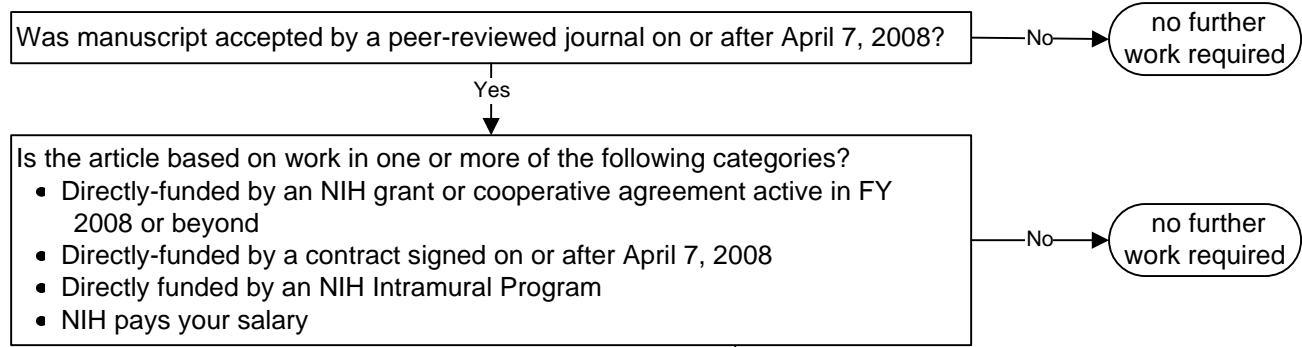
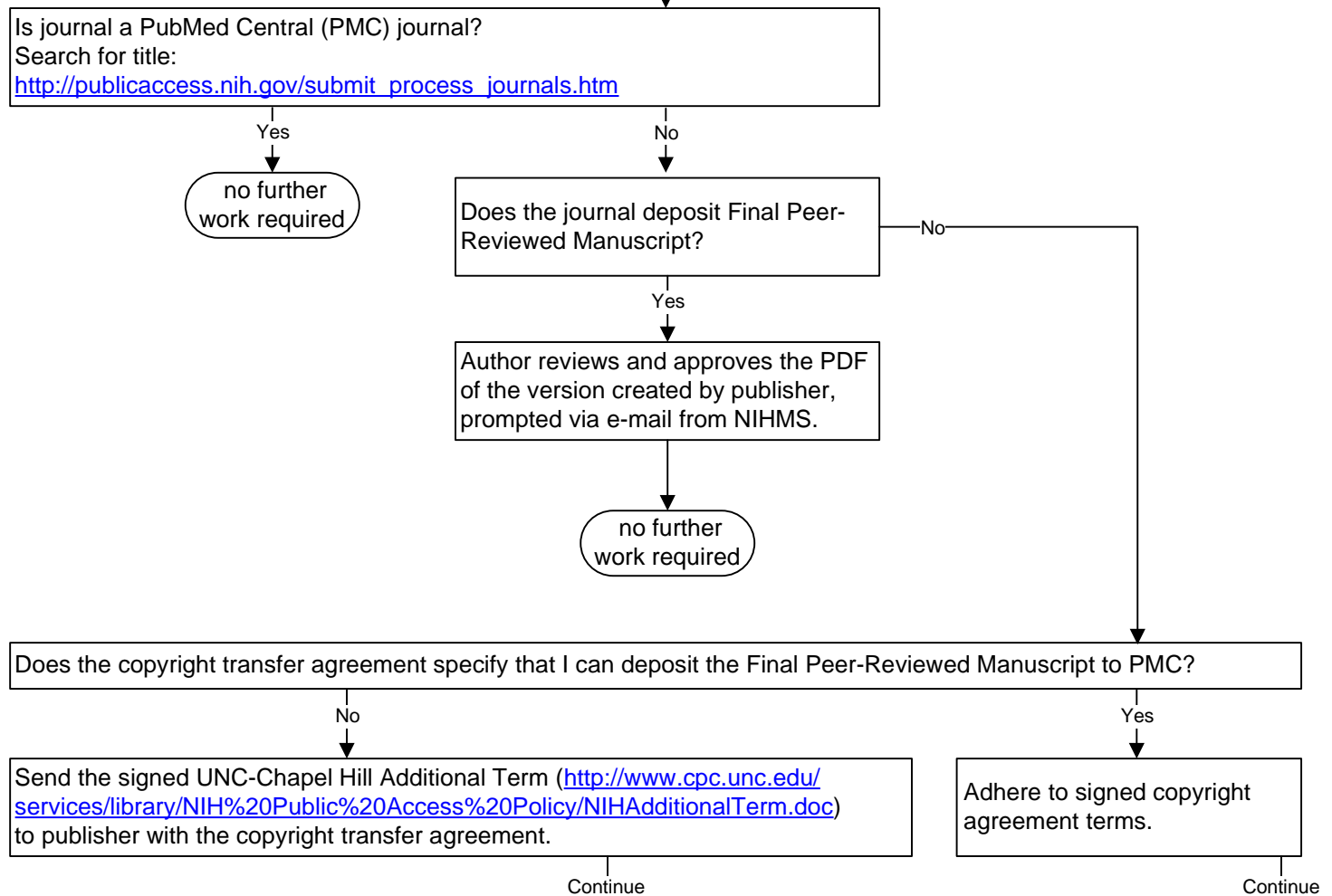


# Complying with the NIH Public Access Policy

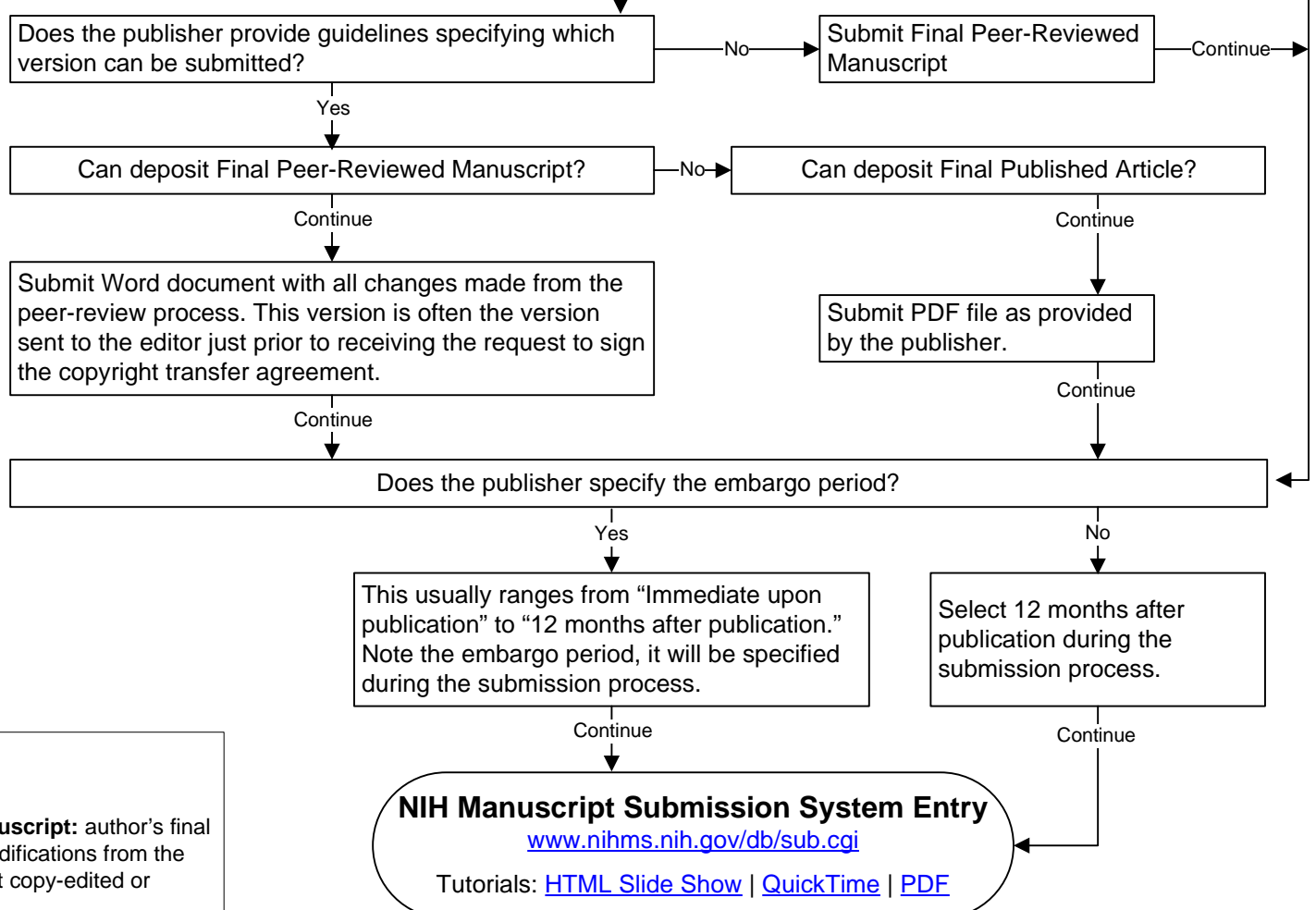
## Which manuscripts must be submitted to PubMed Central?



## Which publishers will submit manuscripts for me and what steps must I take to comply with the policy?



## Which version of the manuscript do I submit?



### Definitions

**Final Peer-Reviewed Manuscript:** author's final manuscript including all modifications from the peer review process but not copy-edited or formatted by publisher.

**Final Published Article:** Journal's authoritative copy of the article, including all modifications from the peer review process, copyediting and stylistic editing, and formatting changes, including page numbers and the journal's masthead.

**Embargo period:** The time period, in months, that the publisher retains rights to distribution of the article. Upon submission to PMC and until the embargo period passes, PMC will provide a brief record of the manuscript.



Carolina Population Center  
University of North Carolina at Chapel Hill

Questions? Please contact [cpclib@unc.edu](mailto:cpclib@unc.edu)