

James Conley Thomas, MPH, PhD

Address	MEASURE Evaluation Carolina Population Center University of North Carolina 123 Franklin Street, Building C, 3 rd floor Chapel Hill, NC 27517
Telephone	919-962-3636
E-mail	jim.thomas@unc.edu
Twitter	@jcthomasphd
LinkedIn	https://www.linkedin.com/in/jamescthomas
Website	www.jcthomas.org
Languages	French, Lingala

Principal Interests and Activities

My principal interests are the **social epidemiology of HIV/AIDS** and **complexity and systems thinking in evaluation**.

As **Director of the MEASURE Evaluation Project** (www.cpc.unc.edu/measure), I oversee MEASURE's global efforts to improve evidence-based decision-making in public health.

My current research is on **HIV referral networks** and **data ethics in low-to-middle-income country routine health information systems**.

I was the principal author of the American Public Health Association's Code of Ethics. I have a particular interest now in **how public health ethics varies across cultures**.

Education

1997-98	Study toward Master of Art in Theology , emphasis in ethics Fuller Theological Seminary, California. Studied during a one-year sabbatical from UNC. The degree could not be completed in the time available.
1987	Doctor of Philosophy in Public Health , emphasis in epidemiology. University of California, Los Angeles Dissertation topic: Risk Factors for Diarrhea Among Young Children in Rural Kenya.
1982	Master of Public Health , emphasis in international maternal and child health University of California, Los Angeles
1977	Bachelor of Science , Emphasis in nutrition science University of California, Davis

Employment

11/12-present	Director MEASURE Evaluation Project, Carolina Population Center, University of North Carolina, Chapel Hill
8/10-10/12	Deputy Director for HIV and Infectious Diseases MEASURE Evaluation Project, Carolina Population Center, University of North Carolina, Chapel Hill
7/99-12/02	Associate Dean for Academic Affairs School of Public Health, University of North Carolina, Chapel Hill
7/96-present	Associate Professor Department of Epidemiology, University of North Carolina, Chapel Hill
7/89-6/96	Assistant Professor Department of Epidemiology, University of North Carolina, Chapel Hill
12/86- 6/89	Epidemiologist Acute Communicable Disease Control County of Los Angeles, Department of Health Services
11/84- 9/85	Research Assistant Nutrition Collaborative Research Support Program, Embu, Kenya.
2/79- 2/81	Public Health Nutritionist Paul Carlson Medical Program, Ubangi Province, Zaire.
4/77-12/77	Journalist and Trainer Community Nutrition Institute, Washington, D.C.

Teaching

Classroom teaching at UNC

	Principal Instructor
2015-2018	Perspectives in Epidemiology (EPID 890)
2009	Global Health Ethics (PUBH 712)*
2006-2010	Fundamentals of Epidemiology (EPID 710)
2002-2013	Social Epidemiology: Concepts and Measures (EPID 826)
2000-2007	The Foundations of Public Health Ethics (EPID 880)
2009-2011	Methods in the Study and Control of Sexually Transmitted Diseases (EPID 224)
1990-1999	Infectious Diseases Epidemiology Seminar (EPID 302)
1993-1995	Community-Oriented Epidemiology (EPID 140)
	* This course was recorded and made into an online course that is offered every year.

Co-Instructor

1990-2007	Introduction to Methods in Infectious Diseases Epidemiology (EPID 752)
1996-1998	Fundamentals of Epidemiology (EPID 710)
1991-1992	Epidemiologic Research Methods (EPID 726)

Teaching Awards

2009	Received the School of Public Health McGavran Award for Excellence in Teaching
2008	Nominated for the UNC award for graduate-level teaching

Other classroom teaching (apart from guest lectures)

2000-2009	Co-instructor. UNC Medical School summer short course on research ethics. The lead instructor was Dr. David Weber
1998	Lecturer. Delivered a series of lectures under the auspices of the Christian Medical and Dental Society for continuing medical education (CME) credit for missionary physicians practicing in African countries. Limuru, Kenya
1997	Lecturer. Delivered a series of lectures under the auspices of the Christian Medical and Dental Society for continuing medical education (CME) credit for missionary physicians practicing in Asian countries. Kuala Lumpur, Malaysia
1996	Lecturer. Epidemiologic methods for studying sexually transmitted diseases University of Washington, Seattle
1995	Lecturer. Epidemiologic methods for studying sexually transmitted diseases University of Washington, Seattle
1992-2000	Faculty Fellow. Sexually Transmitted Diseases Training Center, School of Medicine, UNC
1991	Lecturer. Schools of Medicine in Nairobi Kenya, Kampala Uganda, and Yaounde Cameroon. Sponsored by the International Clinical Epidemiology Network. Visiting Professor. University of Ulm, Germany. Summer course on infectious disease epidemiology
1990-1996	Faculty Fellow. Rockefeller Foundation. International Clinical Epidemiology Network (INCLIN) Program, School of Medicine, UNC
1991-1996	Faculty Fellow. Bureau of Health Professions, DHHS. Public Health Practice Leadership Program, School of Public Health, UNC
1990-1993	Faculty Fellow. Robert Wood Johnson Clinical Scholars Program, School of Medicine, UNC.
1987-1988	Adjunct Lecturer. Department of Epidemiology, School of Public Health, University of California, Los Angeles

Consulting

- 2019 **Consultant on public health ethics**
Conducted a short course on How to Teach Public Health Ethics to faculty of the University of Public Health, Yangon, Myanmar
- 2017 **Consultant on evaluation**
Expert reviewer of instruments for measuring and monitoring Aftercare Successful Outcomes for women who have experienced violence; for International Justice Mission.
- 2013 **Consultant on evaluation**
Advised the International Justice Mission on evaluation of complex systems as it pertains to their work in addressing human trafficking.
- 2011 **Consultant on public health ethics**
Contributed to a meeting led by Public Responsibility in Measurement & Research (PRIM&R) on the topic of distinctions between research and practice.
- 2010 **Consultant on ethics in pandemic influenza in Asian countries**
Led a workshop in Hanoi for the Southeast Asia Field Epidemiology and Technology Network (SAFTEYNET) and CDC on ethics preparedness in the context of pandemic influenza. The conference was attended by national and local-level epidemiologists from 10 Asian countries.
- 2008 **Consultant on ethics in pandemic influenza in African countries**
Led a workshop in Uganda for the African Field Epidemiology Network (AFENET) and CDC on ethics preparedness in the context of pandemic influenza. The conference was attended by field epidemiologists from 15 African countries.
- 2007 **Consultant in teaching public health ethics**
Providing consultation to the Centers for Disease Control and Prevention in the creation of an online ethics training curriculum for all CDC employees.
- 2004-2005 **Research Consultant**
Epidemiologic consultant on "HCV risk reduction intervention as a secondary HIV co-infection prevention"; a component of the Puerto Rico Comprehensive Center for the Study of HIV Disparity.
- 2003-2009 **Consultant in public health ethics**
Member of the Coordinating Committee of the Policy, Ethics, and Law for Core of the NIAID Regional Centers of Excellence for Biodefense and Emerging Infectious Diseases Research.
- 2003-2008 **Research Consultant**
Epidemiologic consultant on the CDC-funded program "HoMBRES - A Lay Health Advisor Approach to STD Prevention," an evaluated intervention to prevent STDs among Hispanics in a rural North Carolina county.
- 2002 **Consultant in public health ethics**
Contributed text on "Teaching Ethics in Schools of Public Health" for the Institute of Medicine report on "Educating public health professionals in the 21st century."
- 1999-2009 **Consultant in HIV/AIDS epidemiology**
Retrovirus Research Center, Universidad Central del Caribe, Puerto Rico.

1996	International Clinical Epidemiology Network site visitor Assessed the feasibility of initiating an International Clinical Epidemiology Network (INCLEN) site in Jamaica.
1993-1996	Research Consultant Designed an interview instrument for research on STDs conducted by Burroughs Wellcome.
1991	International Clinical Epidemiology Network site visitor Consulted faculty in the clinical epidemiology units of the Schools of Medicine in Nairobi Kenya, Kampala Uganda, and Yaounde Cameroon on development of their programs.
1990	Consultant in AIDS epidemiology Assessed the feasibility of conducting research on AIDS prevention in Indonesia for the United States Agency for International Development in the Republic of Indonesia
1988	Contractor in information systems Assessed the feasibility of developing an immunization tracking system for the Pan American Health Organization, Office of Caribbean Program Coordinator, Barbados. Consultant in AIDS surveillance and epidemiology Recommended a means of tracking trends in HIV infection in Morocco for Family Health International, Research Triangle, NC and the Ministry of Health, Morocco. Consultant in information systems Designed and created with dBase software a system for tracking immunizations in Barbados for the Pan American Health Organization/World Health Organization Office of Caribbean Program Coordinator, Barbados.
1981	Consultant in public health nutrition Recommended diets for pregnant and nursing women in Cambodian and Laotian refugee camps for Food for the Hungry, International, Bangkok, Thailand.

Service to the Profession

International, National, and State levels

2019	Abstract review for the annual conference of the International Society for Sexually Transmitted Disease Research NIH Special Emphasis Panel on PAR-16-292, Mobile Health: Technology and Outcomes in Low and Middle Income Countries.
2016	CDC Office of Global Health, Study Section on Evidence-based evaluation and modelling approaches for needs assessment, risk estimation, and outcome predictions for infectious disease epidemics.
2016-2019	American Public Health Association Ethics Section, Ethics Code Task Force, revision of the public health code of ethics
2015-present	<i>Journal of Public Health Management and Practice</i> , member of the editorial board.
2015	NIH Study Section on Mobile Health: Technology and Outcomes in Low and Middle

	Income Countries (ZRG1-IMST K (50).
2014	Invited Participant, World Health Organization meeting on Indicators for Facility-Based Information Systems. Glion-sur-Montreux, Switzerland.
2013-2015	Chair, Working Group of USAID funded Contracting Agents for Global Health Monitoring and Evaluation.
2011	Member, ASPH Global Health Competency Workgroup on Ethical Reasoning and Professional Practice
2010	Contributor to development of a model of preparedness and response care Competencies for public health workers, Association of Schools of Public Health Speaker on public health ethics at the American Board of Dental Public Health annual meeting.
2009	Expert advisor on research ethics in pandemic influenza World Health Organization meeting of public health ethicists, Geneva, Switzerland.
2006	Member of the North Carolina Institute of Medicine committee to address ethics in responding to pandemic influenza.
2005	Joint meeting of the Advisory Committee on Immunization Practices and the National Vaccine Advisory Committee on Planning for the Next Influenza Pandemic. Ethics advisor.
2005-2008	Centers for Disease Control and Prevention. Ethics Subcommittee of the Advisory Committee to the Director. Standing member.
2004-2005	National Institutes of Health study section on Epidemiology of Diabetes, Kidney & Infectious Disease.
2003-2008	Southeast Regional Center for Excellence in Biodefense and Emerging Infections (SERCEB), Ethics Core.
2003	Public Health Leadership Society. Invited participant in a meeting to plan future uses and development of the public health code of ethics.
2002	Institute of Medicine, committee on "Educating public health professionals in the 21st century." Invited presentation to the committee on "teaching ethics in schools of public health." Centers for Disease Control and Prevention, HIV, STD, and TB Prevention. Invited participant and speaker in the meeting on "STD/HIV among women in the non-urban South." Centers for Disease Control and Prevention, HIV, STD, and TB Prevention. Invited participant and speaker in an ethics workshop.
2001	National Institutes of Health; Social Sciences, Nursing, Epidemiology, and Methods (SNEM) study section, ad hoc reviewer of research applications Centers for Disease Control and Prevention, HIV, STD, and TB Prevention.

	Special Emphasis Panel for scientific review of applications to implement community-level interventions for syphilis elimination.
	National Institutes of Health; Social Sciences, Nursing, Epidemiology, and Methods (SNEM) study section, <i>ad hoc</i> reviewer of research applications.
2001-2003	Association of Schools of Public Health and the Hastings Center. Development of a model curriculum for teaching ethics in schools of public health. Advisor.
2001-2008	<i>AIDS Education and Prevention</i> . Member of the editorial board.
2000	National Institutes of Health, Epidemiology and Clinical Studies Study Section. Review of research proposals.
2000-2002	Principal author of a code of ethics for public health as a member of the Public Health Leadership Society's Ethics Work Group. The Code was adopted in February 2002 by the Executive Board of the American Public Health Association.
2000-present	<i>International Journal of STD & AIDS</i> . Member of the editorial board.
2000	National Association of City and County Health Organizations. Invited speaker and workshop participant for a meeting on developing a code of ethics for public health practice.
	Consultant to Public Health Practice Program Office of the Centers for Disease Control and Prevention on education and training for public health practitioners.
	Association of Schools of Public Health. Invited speaker in a workshop on teaching ethics in schools of public health.
	University of Virginia, Charlottesville, Program in Bioethics. Invited speaker.
	Centers for Disease Control and Prevention, Center for HIV, STD, and TB Prevention. Reviewed proposals for STD Prevention Training Centers.
	Civilian Research and Development Foundation. Reviewed proposal for sexually transmitted disease research in the former Soviet Union Countries.
	Family Health International. Member of data monitoring committee for a randomized clinical trial.
1999	Centers for Disease Control and Prevention, Center for HIV, STD, and TB Prevention. Invited speaker on the conduct of participatory action research.
1998	Oxford University Press. Evaluation of the journal <i>Public Health Reports</i> for adoption by Oxford Press.
1997	Centers for Disease Control and Prevention, Center for HIV, STD, and TB Prevention. Review of plans for national gonorrhea and chlamydia surveillance.
	Centers for Disease Control and Prevention, Center for HIV, STD, and TB Prevention. Reviewed proposals for research on Sexually Transmitted Diseases.
1996	National Institutes of Health. AIDS study section, <i>ad hoc</i> reviewer of research applications.

1995-1998	North Carolina Coalition to Prevent Sexually Transmitted Diseases. Founding member and steering committee chair. (This is a state wide group to prevent sexually transmitted diseases in North Carolina through the promotion of service, training, advocacy, and research.)
1995	Institute of Medicine, invited participant in discussion on "Understanding the relationship between STD and HIV prevention in the United States."

Professional, Peer-Reviewed Journals

Editorial Board

2015- present	<i>Journal of Public Health Management and Practice</i>
2000-present	<i>International Journal of STD & AIDS</i>
2001-2008	<i>AIDS Education and Prevention</i>

Reviewer

AIDS Care
 AIDS Education and Prevention
 American Journal of Public Health
 Biodefense and Bioterrorism
 BMC Medical Ethics
 BMC Public Health
 Criminology & Public Policy
 Environmental Health Perspectives
 Epidemiology
 Epidemiologic Reviews
 Ethnicity and Disease
 European Journal of Epidemiology
 International Journal of STD & AIDS
 Journal of Epidemiology and Community Health
 Journal of Law, Medicine & Ethics
 Journal of Public Health Management and Practice
 Journal of Rural Health
 Journal of the American Medical Association
 Oxford University Press
 PLoS One
 Polity Press
 Preventive Medicine
 Social Science & Medicine

Services for the University, School, and Department

2019	Member, Epidemiology Graduate Studies Committee
2018-present	Member of faculty advisory group for the campus digital science initiative
2016-2017	Member of search committee for Director of the Carolina Population Center
2015-present	Faculty Council, Carolina Population Center
2015-2016	Member of search committee for social epidemiology faculty member
2014	Invited speaker on UNC values, UNC Faculty Council meeting.
2014	Invited speaker on faculty ethics, UNC Faculty Executive Committee.
2012	Session leader, Global Orientation on Culture and Ethics, Carolina Center for Public Service
2010	Invited speaker on "Ethics in Public Health Preparedness" at the Orange County, NC annual dinner in recognition of community emergency response volunteers
	Member of the advisory board for the Parr Center for Ethics at the University of North Carolina, Chapel Hill
2007-present	Member of the advisory committee for the teaching of public health to UNC medical Students.
2007-2009	Member of the ad hoc committee to evaluate public health practice in the UNC School of Public Health.
2007-2009	Chair of search committee for an associate research professor in the Department of Epidemiology, with expertise in social epidemiology and international health.
2004	Member of search committee for an assistant professor in the Department of Health Behavior and Health Education, with expertise in international health.
2003	Member of admissions committee, Department of Epidemiology.
2003-2010	Member of search committee for chair of the Department of Health Behavior and Health Education.
2003	North Carolina Center for Public Service, Robert E. Bryan Fellowship. Mentoring a student (David Edwards) in applying for the fellowship and then implementing the proposed program for services to women in the Raleigh homeless shelter.
2003-2005	Committee on the Ethical, Legal, and Social Implications (ELSI) of genomics in public health; Chair.
2001-2011	School of Public Health Program in Public Health Ethics; Director.
2000-2002	UNC-CH Executive Committee on Research Compliance (research ethics); Representative from the School of Public Health
2000-2007	Ethics Advisory Committee, UNC Institute for the Arts & Humanities; Member.
1999-2002	Associate Dean for Academic Affairs, School of Public Health
1998-1999	School of Public Health Institutional Review Board; member.
1998-2001	Infectious Diseases Epidemiology Program, Department of Epidemiology; Director.
1998-present	Center for AIDS Research, UNC; Member
1998-1999	Admissions Committee, Department of Epidemiology; Chair.

1996-1998	Committee for the Review of Research on Human Subjects, School of Public Health; Member.
1996	Member of search committee for dean of the School of Public Health.
1995	Member of search committee for chair of the Department of Epidemiology.
1994	Chair of search committee for research assistant professor in Epidemiology.
1993-1994	Member of administrative advisory group to chair of the Department of Epidemiology.
1994-1997	Admissions Committee, Department of Epidemiology; Member.
1993-1994	Faculty Council, University of North Carolina at Chapel Hill; Representative.

Social entrepreneurialism

2016	Created a program linking carbon offsets for airline travel with improvement of energy efficiency of low income homes in North Carolina. Collaboration with North Carolina Sustainable Energy Association (https://energync.site-ym.com/donations/)
2006-2014	Founder and President of Africa Rising, a 501(c)(3) organization based in Chapel Hill, NC that generates effective responses to the challenges of African communities by building intentional networks of African social entrepreneurs.
2004 – 2010	Vice President of Antioch Builds Community, a 501(c)(3) organization benefiting families affected by incarceration in inner city Durham, NC.
2007	Organizer of and speaker for the Mission Through the Lens of AIDS track of Urbana, a faith-based ecumenical conference attended by 25,000.

Honors, Awards, and Professional Affiliations

Honors and Awards

2016	Global health expert in residence, Duke University
2012-present	Fellow, Carolina Population Center, University of North Carolina
2009	McGravran Award for Excellence in Teaching, UNC School of Public Health
2005-2017	Fellow, Parr Center for Ethics, University of North Carolina
2002	Moister Fellow of Ethics, University of North Carolina Institute for the Arts and Humanities
1987	Delta Omega honorary public health society, UCLA School of Public Health
1981-86	U.S. Public Health Service Traineeship, UCLA School of Public Health

Memberships

American Evaluation Association
 American Public Health Association
 International Network for Social Network Analysis
 Association of Professional and Practical Ethics
 Delta Omega Public Health Society

Grants and Contracts

Currently funded

7/14-6/20	United States Agency for International Development. MEASURE Evaluation Phase IV. Principal Investigator (\$232,000,000)
10/18-9/23	United States Agency for International Development. TB Data, Impact Assessment, and Communications Hub. Principal Investigator (\$36,000,000)
4/19-3/24	United States Agency for International Development. Malaria Surveillance, Monitoring, and Evaluation . Principal Investigator (\$36,000,000)

Completed

11/12-10/17	United States Agency for International Development. MEASURE Evaluation Phase III, Kenya Project ("PIMA"). Principal Investigator (\$35,000,000)
2008-2014	United States Agency for International Development. MEASURE Evaluation Phase III, Principal Investigator (\$181,000,000).
2012-2013	United States Agency for International Development via MEASURE Evaluation "Network analysis of organizations serving men who have sex with men in Chiang Mai, Thailand." Principal Investigator.
2010-2013	United States Agency for International Development via MEASURE Evaluation. "Network analysis for the integration of HIV and family planning services in Addis Ababa, Ethiopia." Principal Investigator.
2010-2013	United States Agency for International Development via MEASURE Evaluation. "The relation between women's property rights and HIV risk." Principal Investigator.
2008-2012	Centers for Disease Control and Prevention. "Preparedness and Response Research Centers", Co-investigator.
2008-2010	UNC Center for AIDS Research. "Agency networks for the treatment of HIV in KwaZulu-Natal, South Africa."
2008-2009	UNC African Studies Center. "Kenyan perspectives on public health ethics." Principal Investigator.
2008-2009	Anonymous donation to the UNC Office of Global Health. "Creation of an on-line course in global health ethics." Creator/instructor.
2008-2009	UNC Office for Research and Development. "Thai public health ethics in the context of pandemic influenza." Principal Investigator.
2008-2009	North Carolina Public Health Academy (grants from HRSA and the Duke Endowment) "Updating on-line course in domestic public health ethics." Creator/instructor.
2008-2008	National Institute of Research Resources. "General Clinical Research Center" Epidemiologist.

2006-2008	Greenwall Foundation. "Ethics in public health emergencies." Principal Investigator.
2006-2008	National Institute of Allergy and Infectious Diseases. "The epidemiology of human monkeypox in the Sankuru District of the Democratic Republic of the Congo" Co-Principal Investigator.
2006-2007	National Institute of Child and Human Development. "Surveillance of human Monkeypox by the Department of Hemorrhagic Fevers and Monkeypox, Ministry of Health, Democratic Republic of Congo. Co-Principal Investigator.
2006-2007	Ethnicity, Culture and Health Outcomes (ECHO) seed grant for studying the health effects of incarceration among ex-offenders in Guildford County, NC. Principal Investigator.
2006-2007	UNC Office of the Vice Chancellor for Research and Economic Development seed grant for the study of the effects of HIV progression among people in San Francisco in unstable housing. Co-investigator.
2005-2006	Southeast Regional Center for Excellence in Biodefense and Emerging Infections (SERCEB), Ethics Core. Commissioned paper on ethical considerations in responding to pandemic influenza.
2005-2007	National Institute of Mental Health. "Neighborhood effects of incarceration on STD and AIDS rates." Principal Investigator.
2001-2005	National Institutes of Health. "The effects of hepatitis C co-infection on the transmission of HIV-1 in Puerto Rico. Co-investigator (Robert Gonzalez, Principal Investigator, Universidad Central del Caribe).
2005	MEASURE Evaluation Program, USAID. "Interagency coordination for HIV prevention and family planning in Gaya, Niger. Principal Investigator.
2004	Agency for Healthcare Research and Quality. "Life After Prison: ethnographic interviews with ex-offenders in Durham County, NC." Principal Investigator.
2003-2004	Open Society Institute. "The effects of concentrated incarceration on health outcomes in North Carolina." Principal Investigator.
2001-2004	Agency for Healthcare Research and Quality. "The influence of interagency coordination on rates of syphilis and HIV." Principal Investigator.
2003-2004	Greenwall Foundation. "The development of core competencies in public health ethics." Principal Investigator.
2003-2004	Centers for Disease Control and Prevention. "Public health and genomics," Principal Investigator: Robert Millikan. My component: "The ethical, legal, and social implications of genomics in public health."
2003-2004	Public Health Institute, UNC. Furthering the agenda of public health ethics.
2003	Public Health Leadership Institute. Developing an on-line lecture series on public health ethics.

2001-2002	UNC Health Affairs Interdisciplinary Committee. "A multidisciplinary course in genetics focusing on ethical, legal, and social implications of recent advances in genetics." Co-Investigator (Dr. Marcia VanRiper, Principal Investigator).
2002	Association of Schools of Public Health and the Hastings Center. Development of a model curriculum for teaching ethics in schools of public health. Writing one of the ten modules that make up the model curriculum.
1999-2000	Institute of Medicine. Writing an appendix on "Teaching Ethics in Schools of Public Health" for the report on "Educating public health professionals in the 21st century."
1999-2001	Center for AIDS Research, University of North Carolina at Chapel Hill. "Does a high rate of incarceration in a community lead to high rates of HIV/STD?" Principal Investigator. Glaxo-Wellcome. "A program to treat and prevent sexually transmitted Diseases in a North Carolina County." Principal Investigator.
1996-1997	North Carolina Department of Environment, Health, and Natural Resources; HIV/STD Control Section. Supplement to "A Lay Health Advisor Program to Prevent STDs." Principal Investigator.
1995-1999	National Institute of Allergy and Infectious Disease. "A Lay Health Advisor Program to Prevent STDs." Principal Investigator.
1994-1995	Centers for Disease Control and Prevention and the Association of Schools of Public Health. "Ecological Study of Sexually Transmitted Diseases." Principal Investigator.
1994-1996	UNC University Research Council. "Sexually transmitted diseases among Hispanic migrants in eastern North Carolina." Principal Investigator.
1991-1995	National Institute of Allergy and Infectious Disease. Microbiology Core of UNC STD Center grant. Co-Principal Investigator.
1991-1995	National Institute of Allergy and Infectious Disease. "The Epidemiology of STDs in Rural North Carolina." A four-year study which is one component of the UNC STD Center grant. Principal Investigator.
1990-1992	Program for Health Promotion and Disease Prevention, School of Public Health, University of North Carolina at Chapel Hill. Pilot study entitled "Modifying behavior among high frequency transmitters of sexually transmitted disease." Principal Investigator.
1990	North Carolina Medical Society. Pilot study entitled "Modifying behavior among high frequency transmitters of sexually transmitted disease." Principal Investigator.
1990	UNC International Public Health Program. Travel grant to Indonesia for preparing an NIH research proposal.
1988	Pan American Health Organization, Office of Caribbean Program Coordinator, Barbados. Development of information system for tracking immunizations.
1988-1989	State of California, Department of Health Services. Special Needs and Priority Project. Analysis of Hospital Discharge Data for Reportable Diseases. Principal Investigator.

Publications in refereed journals

Manuscripts under review and in preparation

1. Watson-Grant S, **Thomas JC**, Hassmiller Lich K. Systems mapping to guide Botswana's health information system. (Under review at [International Health](#))
2. Agala B, Fried B, Zimmer C, **Thomas JC**, Morrissey J, Whetten K, Hassmiller Lich K. Measurement invariance of quality of life among HIV positive women in Ethiopia. (under review at [Psychological Assessment](#))
3. Agala B, Fried B, Zimmer C, **Thomas JC**, Morrissey J, Whetten K, Hassmiller Lich K. Measurement invariance of HIV treatment adherence among HIV positive women in Ethiopia. (under review at [PLOS One](#))
4. Agarwal S, Angeles G, Singh K, Speizer I, **Thomas JC**, Curtis S. Are Community Health Workers effective in retaining women in the maternity care continuum? Evidence from India (under review at [Maternal and Child Health](#))
5. Agarwal S, Angeles G, Singh K, Speizer I, **Thomas JC**, Curtis S. The impact of India's Accredited Social Health Activist (ASHA) programme on the utilization of maternity services: a retrospective observational study.
6. **Thomas JC**, Reis A, Fleming V. Principled health information systems. (Under review at [J Information Technology and Management](#))
7. **Thomas JC**, Kumar M. Questions as an organizing framework for health information systems. (Under review at the [Int J Health Planning and Management](#))

Published articles

- | | |
|------|---|
| 2018 | <ol style="list-style-type: none"> 98. Gruber JF, Becker-Dreps S, Hudgens MG, Brookhart A, Thomas JC, Jonsson Funk M. Timing of rotavirus vaccine doses and incidence of severe rotavirus gastroenteritis among vaccinated infants in low- and middle-income countries. <i>Epidemiology</i> 2018;29:867-75. 97. Thomas JC, Agala CB, Xiong K, Powell RA. Improving referrals for HIV care through organizational network analysis. <i>J Public Health Management Practice</i> 2018 (in press). 96. Yourkavitch J, Hassmiller-Lich K, Flax V, Thomas JC. Interactions among poverty, gender, and health systems affect women's participation in services to prevent HIV transmission from mother to child: a causal loop analysis. <i>PLOS One</i> 2018 (in press). 95. Gruber JF, Becker-Dreps S, Hudgens MG, Brookhart A, Thomas JC, Jonsson Funk M. Timing and predictors of severe rotavirus gastroenteritis among unvaccinated infants in low- and middle-income countries. <i>Epidemiology and Infection</i>. 2018 (in press). 94. Agala B, Fried B, Zimmer C, Thomas JC, Morrissey J, Whetten K, Hassmiller Lich K. Organizational network strengthening effects on antiretroviral therapy initiation and adherence. <i>Translational Behavioral Medicine</i> 2018 (in press) |
|------|---|

- 2017 93. Schriver B, Mandal M, **Thomas JC**. Evaluation of HIV-related structural interventions. *AIDS and Behavior*. 2017.
92. Yourkavitch J, Alvey J, Prosnitz D, Labbok M, **Thomas J**. Engaging men to promote and support exclusive breastfeeding: a pooled analysis of USAID's Child Survival and Health Grants Program, 2003–2013. *Journal of Health, Population and Nutrition*. 2017;36.
91. Watson-Grant S, Xiong K, **Thomas JC**. Achieving sustainability in health information systems: a field tested measure of country ownership. *Globalization and Health* 2017;13.
- 2016 91. **Thomas JC**. Contextual factors affecting receptivity to an information culture. *Global Public Health*. 2016;1-11. doi: <http://dx.doi.org/10.1080/17441692>. 2016. 1256419.
89. **Thomas JC**, Silvestre E, Salentine S, Reynolds H, Smith J. The Iceberg below the Indicators: What systems are essential to achieving the Sustainable Development Goals and what will it take to marshal them? *Health Policy and Planning* 2016 (in press).
88. Lor A, **Thomas JC**, Barrett D, Ortman L, Herrera D. Cultural perspectives on key ethical issues in the context of pandemic influenza preparedness and response. *Int J Health Policy Manag* 2016; 5:653–62. doi:10.15171/ijhpm.2016.55
- 2015 87. **Thomas JC**, Reynolds H, Bevc C, Alterescu X, Tsegaye A. Improving referrals and integrating family planning and HIV services through organizational network strengthening. *Health Policy and Planning* 2015;31:302-8.
86. **Thomas JC**, Miller R. Ebola: The ethics of thinking ahead. *J Public Health Management and Practice* 2015;21;507-8.
85. Tumlinson K, **Thomas JC**, Reynolds H. The effect of women's property rights on HIV: A search for quantitative evidence. *AIDS Care* 2015;27;112-22.
- 2014 84. **Thomas JC**, Reynolds H, Bevc C, Tsegaye A. An organizational network analysis perspective on coordination of HIV care and family planning services in Addis Ababa, Ethiopia. *BMC Health Services Research* 2014;14:22 (doi:10.1186/1472-6963-14-22).
83. **Thomas JC**, Hardee K, Parks A, Boone D, Brown W, Pacquée-Margolis S, Tran Ba Huy R. Global action networks in health: A case study of data quality. *Global Health Governance* 2014;VII:80-95.
- 2013 82. Mayor AM, Fernández DM, Colón HM, **Thomas JC**, Miranda C, Hunter-Mellado RF. Multimedia hepatitis-C prevention program for poor HIV-infected injecting drug users. *Journal of Health Care for the Poor and Underserved* 2013;24:Suppl 29-37.
81. Sever ML, **Thomas J**, Calatroni A, Yeatts K, Visness C, Mitchell H. Allergen exposure influences the relationship between community violence and asthma morbidity: The Inner City Asthma Study. *Journal of Allergy and Clinical Immunology* 2013;131:AB55.
- 2011 80. **Thomas JC**. Invited response to letter regarding Wake me up when there's a crisis: Progress in pandemic influenza ethics preparedness. *Am J Public Health* 2011;101:2080-2.
79. Johnsson Funk M, Fusco JS, Cole SR, **Thomas JC**, Porter K, Kaufman JHS, Davidian M, White AD, Hartmann KE, Eron Jr JJ. Timing of HAART initiation and clinical outcomes in human immunodeficiency virus type 1 seroconverters. *Arch Intern Med* 2011;171:1560-9.

78. **Thomas JC**, Young S. Wake me up when there's a crisis: Progress in pandemic influenza ethics preparedness *Am J Public Health* 2011;101:2080-2.
77. **Thomas JC**, Curtis S, Smith J. The broader context of implementation science [letter]. *JAIDS* 2011;58:e19-21.
76. Muula AS, **Thomas JC**, Pettifor AE, Strauss RP, Suchindran CM, Meshnick SR. Religion, condom use acceptability and use within marriage among rural women in Malawi. *World Health & Population* 2011;12:35-47.
75. Nguyen Q, Waddell E, **Thomas JC**, et al. Inequalities in awareness, treatment and control of hypertension and hypercholesterolemia among the insured in New York City. *Prev Chron Dis* 2011;8:A109.
74. Hajat A, Kaufman J, Rose KM, Siddiqi A, **Thomas JC**. Long-term effects of wealth on mortality and self-reported health status. *Am J Epidemiol* 2011;173:192-200.
- 2010 73. Torrone EA, **Thomas JC**, Maman S, Pettifor AE, Kaufman JS, Sena AC, Hightow-Weidman LB. Risk behavior disclosure during HIV test counseling. *AIDS Patient Care and STDs* 2010;24:551-61.
72. Hajat A, Kaufman J, **Thomas JC**, et al. Do the wealthy have a health advantage? Cardiovascular disease risk factors and wealth. *Soc Sci Med* 2010;71:1935-42.
71. Mayor AM, Fernández DM, Colón HM, **Thomas JC**, Hunter-Mellado RF. The effectiveness evaluation of a multimedia hepatitis C prevention program for Hispanic HIV-infected individuals. *Ethnicity & Disease* 2010;20,Suppl 1:S1-158-62.
70. **Thomas JC**, Torrone E, Browning C. Neighborhood characteristics affecting sexually transmitted disease rates in Chicago. *J Urban Health* 2010;87:102-12.
69. Torrone E, **Thomas JC**, Kaufman JS, Pettifor AE, Leone PA, Hightow-Weidman LB. Glen or Glenda? Reported gender of sex partners in two statewide HIV databases. *Am J Public Health* 2010;100:525-30.
68. Torrone E, Levandowski BA, **Thomas JC**, Isler MR, Leone PA. Identifying gaps in HIV prevention services. *Soc Work Public Health* 2010;25:327-40.
67. Porter K, **Thomas JC**, Emch ME. Variations in the effect of incarceration on community gonorrhea rates, Guilford County, North Carolina, 2005-2006. *Int J STD AIDS* 2010;21:34-8.
- 2009 66. **Thomas JC**, MacDonald P, Wenink E.. Ethical decision-making in a crisis: a case study ethics in public health emergencies. *J Public Health Management and Practice* 2009;15:E16-21.
- 2008 65. **Thomas JC**, Levandowski B, Torrone E, Isler MR, Wilson G. Incarceration and sexually transmitted infections: A neighborhood perspective. *J Urban Health* 2008;85:90-99.
64. **Thomas JC**. An agenda for public health ethics. *J Public Health Management and Practice* 2008;14:329-31.

63. Torrone E, **Thomas JC**, Leone P, McCoy SI, Hightow LB. Late diagnosis of HIV in young men in North Carolina: Letter to the Editor. Authors' Reply. *Sex Trans Dis* 2008;35:323.
62. Mayor AM, Fernández DM, Colón HM, **Thomas JC**, Hunter-Mellado RF. The acceptability of a multimedia hepatitis C prevention program for Hispanic HIV infected individuals. *Ethnicity & Disease* 2008;18(2 Suppl 2):S2-195-9.
61. **Thomas JC**, Torrone E, Levandowski B, Isler M. Pulling together: Interagency coordination for HIV prevention in ten North Carolina counties. *J Public Health Management and Practice* 2008;14:E1-6.
- 2007 60. Torrone E, **Thomas JC**, Leone P, McCoy SI, Hightow LB. Late diagnosis of HIV in young men in North Carolina. *Sex Trans Dis* 2007;34:846-8.
59. Martinot A, **Thomas JC**, Thiermann A, Dasgupta N. Avian influenza prevention and control: A paradigm shift in pandemic influenza preparedness. *Veterinary Record* 2007;160:343-5.
58. **Thomas JC**, Desgupta N, Martinot A. Ethics in a pandemic: A survey of the state pandemic influenza plans. *Am J Pubic Health* 2007;97 Suppl 1:S26-31.
57. **Thomas JC**, Isler MR, Carter C, Torrone E. An interagency network perspective on HIV prevention. *Sex Trans Dis* 2007;34(2):71-5.
- 2006 56. **Thomas JC**. From slavery to incarceration: Social forces affecting the epidemiology of STDs in the rural South. *Sex Trans Dis* 2006;33(7 Suppl):S6-10.
55. **Thomas JC**, Torrone E. Incarceration as forced migration: Selected community health effects. *Am J Public Health* 2006;96:1762-5.
54. Jackson LE, Hilborn ED, **Thomas JC**. Towards landscape design guidelines for reducing Lyme disease risk. *Int J Epidem* 2006;35:315-22.
53. Mayor AM, Gomez MA, Fernandez DM, Rios-Olivares E, **Thomas JC**, Hunter RF. Morbidity and mortality profile of HIV-infected patients, with and without hepatitis C co-infection. *Am J Trop Med Hygiene* 2006;74:239-45.
- 2005 52. **Thomas JC**, Zuiker E, Millikan R, Rockhill B. Genomics and public health ethics. *Am J Public Health* 2005;95: 2139-43.
51. Cook-Deegan R, Berkelman R, Davidson EM, Finder S, Heitman E, Kelley MC, King NMP, Moseley R., **Thomas JC**, Tilden SJ, Vangnes NM. Institutional biosafety committees and biodefense [letter]. *Science* 2005;308:1867-8.
50. Baez-Feliciano DV, **Thomas JC**, Gomez MA, et al. Changes in the AIDS epidemiologic situation in Puerto Rico following health care reform and the introduction of HAART. *Pan American Journal of Public Health* 2005;2:92-101.
49. **Thomas JC**. Skills in the ethical practice of public health. *J Public Health Management and Practice*. 2005;11:260-1.
48. **Thomas JC**, Sampson L. Incarceration as a social force affecting STD rates. *Journal of Infectious Diseases* 2005;191:S55-S60.

- 2004 47. Dombrowski J, **Thomas JC**, Kaufman J. A study in contrasts: Measures of racial disparity in the occurrence of gonorrhea. *Sexually Transmitted Diseases* 2004;31:149-53.
46. Brandenburg T, Guillory J, Melnick A, **Thomas JC**, Williams C. The public in public health ethics [letter]. *Am J Public Health* 2004;94:7.
- 2003 45. **Thomas JC**. Teaching ethics in schools of public health. *Public Health Reports* 2003;118:279-286.
44. **Thomas JC**, Gaffield ME. Social Structure, race, and gonorrhea rates in the southeastern United States. *Ethnicity and Disease* 2003;13:362-8.
- 2002 43. Napravnik S, Poole C, **Thomas JC**, Eron J. Gender and human immunodeficiency virus (HIV) viral load: a meta-analysis of published studies *J AIDS* 2002;31:11-19.
42. Howards PP, **Thomas JC**, Earp JA. How appropriate are clinic-based STD data for designing community-based interventions? *Int J STD AIDS* 2002;11:775-80.
41. **Thomas JC**, Sage M, Dillenberg J, Guillory VJ. A code of ethics for public health. *Am J Public Health* 2002; 92:1057-9.
40. Thach SB, Eng E, **Thomas JC**. Defining and assessing organizational competence in serving communities at risk for STDs *Journal of Health Promotion Practice* 2002;3:217-32.
- 2001 39. **Thomas JC**, Eng E, Earp JA, Ellis H. Trust and collaboration in the prevention of sexually transmitted diseases. *Public Health Reports* 2001;116:540-7.
38. McDonald MA, **Thomas JC**, Eng E. When is sex safe?: Insiders' views on sexually transmitted disease prevention and treatment. *Health Education & Behavior* 2001;28:624-42.
- 2000 37. **Thomas JC**, Earp JA, Eng E. Evaluation and lessons learned from a lay health advisor program to prevent sexually transmitted diseases. *Int J STD AIDS* 2000;11:812-8.
36. **Thomas JC**, Weiner DH, Earp JA, Schoenbach VJ. Frequent reinfection in a community with hyperendemic gonorrhea and chlamydia: appropriate clinical actions. *Int J STD AIDS* 2000;11:461-7.
35. McKaig RG, Patton LL, **Thomas JC**, Strauss RP, Slade GD, Beck JD. Factors associated with periodontitis in an HIV-infected Southeast USA study. *Oral Dis* 2000; 6:158-165.
- 1999 34. **Thomas JC**, Lansky A, Weiner DH, Earp JA, Schoenbach VJ. Behaviors facilitating sexual transmission of HIV and STDs in a rural community. *AIDS and Behavior* 1999;3:257-68.
33. Blumenthal C, Eng E, **Thomas JC**. STEP sisters, sex, and STDs: A process evaluation of the recruitment of lay health advisors. *American Journal of Health Promotion* 1999;14:4-6.
32. **Thomas JC**, Thomas K. Things ain't what they ought to be: Social forces underlying high rates of sexually transmitted diseases in a rural North Carolina county. *Soc Sci & Med* 1999;49:1075-84.

31. Martin SL, Matza LS, Kupper LL, **Thomas JC**, Daly M. Domestic violence and sexually transmitted diseases: The experiences of prenatal care patients. *Public Health Reports* 1999;114:262-8.
30. Pierce RL, **Thomas JC**, Sparling PF, Fisher W, Davis RH, Alcorn T, Cohen M. An epidemiologic evaluation of the use of microbiologic tools for identifying gonorrhea infection networks. *Int J STD AIDS* 1999;10:316-323.
29. Irwin DE, **Thomas JC**, Spitters CE, Leone PA, Stratton JD, Martin DH, Zenilman JM, Schwebke JR, Hook EW. Self-reported sexual activity and condom use among symptomatic clients attending STD clinics. *Sex Trans Dis* 1999;26:286-90.
28. Hobbs MM, Alcorn TM, Davis RH, Fisher W, **Thomas JC**, Martin I, Ison C, Sparling PF, Cohen MS. Molecular Typing of *Neisseria gonorrhoeae* causing repeated infections: Evolution of porin during passage within a community. *J Infect Dis* 1999;179:371-81.
27. Fox KK, **Thomas JC**, Weiner DH, Davis DH, Sparling PF, Cohen MS. Longitudinal evaluation of serovar-specific immunity to *Neisseria gonorrhoeae*. *Am J Epidemiol* 1999;149:353-8.
26. Cook RL, Royce RA, **Thomas JC**, Hanusa BH. What's driving an epidemic? The spread of syphilis in rural North Carolina along an interstate highway. *Am J Public Health* 1999; 89:369-73.
25. **Thomas JC**, Clark M, Robinson J, Monnett M, Kilmarx PH, Peterman TA. The social ecology of syphilis. *Social Science & Medicine* 1999;48:1081-1094.
24. Michelson KN, **Thomas JC**, Boyd C, Janssens AH. Chlamydia trachomatis infection in a rural population: the importance of screening men. *International Journal of STD & AIDS* 1999;10:32-7.
- 1998 23. McKaig RG, **Thomas JC**, Patton LL, Strauss RP, Slade GD, Beck JD. Prevalence of HIV-associated periodontitis and chronic periodontitis in a southeastern US study group. *J Pub Health Dent* 1998;58:294-300.
22. **Thomas JC**, Eng E, Clark M, Robinson J, Blumenthal C. Lay Health Advisors: Sexually transmitted disease prevention through community involvement. *Am J Public Health* 1998;88:1252-3.
21. Lansky A, **Thomas JC**, Earp JA. Partner-specific sexual behaviors among persons with both main and other partners. *Fam Plan Persp* 1998;30:93-6.
20. Ahluwalia I, DeVellis RF, **Thomas JC**. Reproductive decisions of women at risk for acquiring HIV infection. *AIDS Ed Prev* 1998;10:90-7.
- 1997 19. Irwin DE, **Thomas JC**, Spitters CE, Leone PA, Stratton JD, Martin DH, Zenilman JM, Schwebke JR, Hook EW. Self-treatment patterns among clients attending sexually transmitted disease (STD) clinics and the effect of self-treatment on STD symptom duration. *Sex Trans Dis* 1997;24:372-7.
18. Hira SK, Feldblum PH, Kamanga J, Mudelabai G, Weir SS, **Thomas JC**. Condom and nonoxymol-g use and the incidence of HIV infection in serodiscordant couples in Zambia. *Int J STD AIDS* 1997; 8:243-250.

17. Kilmarx PH, Zaidi AA, **Thomas JC**, Nakashima AK, St. Louis ME, Flock ML, and Peterman TA. Ecologic analysis of socio-demographic factors and the variation in syphilis rates among counties in the United States, 1984-93. *Am J Public Health* 1997;87:1937-43.
- 1996 16. **Thomas JC**, Schoenbach VJ, Eng G, McDonald MA. Rural gonorrhea in the southeastern United States: a neglected epidemic? *Am J Epidemiol* 1996;143:269-77.
15. **Thomas JC**, Tucker M. The development and use of the concept of a sexually transmitted disease core. *J Infect Dis* 1996;174(Suppl 2):S134-43.
- 1995 14. **Thomas JC**, Kulik A, Schoenbach VS, Weiner D. Syphilis in the South: rural rates surpass urban rates in North Carolina. *Am J Public Health* 1995;85:1119-22.
13. Schuster J, **Thomas JC**, Eng E. Bridging the culture gap in sexually transmitted disease clinics. *NC Med J* 1995;56:256-69.
12. Smucker D, **Thomas JC**. Evidence of thorough reporting of sexually transmitted diseases in a Southern rural county. *Sex Trans Dis* 1995;22:149-54.
- 1993 11. **Thomas JC**, Bendana N, Waterman SW, et al. Meningococcal disease in Los Angeles County, 1981-1990. *Am J Public Health* 1993;83:1790-1.
10. Shen CY, Chang SF, Chao MF, Yang SL, Lin GM, Chang WW, Wu CW, Yen MS, Ng HT, **Thomas J**, Huang ES. Cytomegalovirus recurrence in seropositive pregnant women attending obstetric clinics. *J Med Virol* 1993;41:24-9.
- 1992 9. Lansky A, **Thomas JC**, Earp JA. Visits to private physicians in urban North Carolina for sexually transmitted diseases. *North Carolina Med J* 1992;427-30.
8. **Thomas JC**, Neumann CN. Choosing an appropriate measure of diarrhea occurrence, with examples from a community-based study in rural Kenya. *Int J Epid* 1992;21:589-93.
7. Hill D, **Thomas JC**, Kerndt P, et al. HIV-1 seroprevalence among parturient women delivering in public hospitals in Los Angeles County. *Ob Gyn* 1992;79: 657-60.
- 1991 6. Ewert D, **Thomas JC**, Chun L, et al. Measles vaccination coverage among Latino children aged 12-59 months in Los Angeles County: a household survey. *Am J Public Health* 1991;81:1057-9.
5. **Thomas JC**, Bendana N, Waterman SW, et al. Risk factors for carriage of meningococcus in the Los Angeles County men's jail system. *Am J Epidemiol* 1991;133:286-95.
- 1990 4. **Thomas JC**, Chun L. Aseptic meningitis in football players. *J School Health* 1990;60:395.
3. **Thomas JC**, Frerichs RR, Neumann CN. The effect of misclassification of diarrhea on estimates of its occurrence, the identification of risk factors, and the assessment of prevention efforts. *J Diar Dis Res* 1990;7:63-9.
- 1989 2. **Thomas JC**, Bendana N, Fujioka K, Waterman SH. Community-acquired group A streptococcal deaths in Los Angeles County. *J Infect Dis* 1989;160:1086-7.

1. **Thomas JC**, Bridge J, Waterman SW, et al. Transmission and control of methicillin-resistant *Staphylococcus aureus* in a skilled nursing facility. *Infect Cont* 1989;10:106-110.

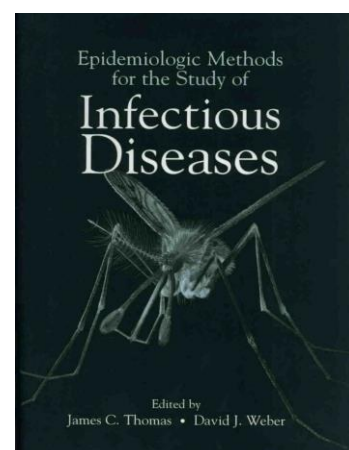
Monographs (*peer-reviewed)

- 2019 *Wambugu S, Thomas JC, Johnson D, Villella C. Data Ethics: Harnessing the Power of Digital Health Information Systems.
- 2016 *Hart L, Iskarpatyoti BS, Mandal M, Thomas JC. Evaluating Structural Interventions – Guidance for HIV prevention programs. Available online at: <https://www.measureevaluation.org/resources/publications/tr-16-139>
- *Watson-Grant S, Xiong K, **Thomas JC**. Country ownership in international development: Toward a working definition. MEASURE Evaluation, 2016. Available online at: <https://www.cpc.unc.edu/measure/resources/publications/wp-16-164>.
- *Agala CB, Xiong K, **Thomas JC**, Powell R. Referral Network Analysis for Improved HIV Care in Homa Bay County, Kenya. MEASURE Evaluation, 2016. Available online at: <http://www.cpc.unc.edu/measure/resources/publications/wp-16-159>.
- 2014 *Reynolds HW, Curran J, **Thomas JC**. Organizational Network Analysis: MEASURE Evaluation’s Experience 2010-2014. MEASURE Evaluation, 2014. Available online at: <http://www.cpc.unc.edu/measure/publications/sr-14-103>.
- 2013 ***Thomas JC**, Tumlinson K. Protecting the land and inheritance rights of HIV-affected women in Kenya and Uganda: A compendium of current programmatic and monitoring and evaluation approaches. MEASURE Evaluation, 2013. Available online at: <http://www.cpc.unc.edu/measure/publications/sr-13-80>.
- 2007 ***Thomas JC**. Ethical concerns in pandemic influenza preparation and responses. Southeast Regional Center of Excellence for Emerging Infections and Biodefense, 2007. Available online at: http://www.unc.edu/~thomasjc/documents/pandemic_flu_white_paper_Thomas.pdf
- 2006 ***Thomas JC**, Ethical Concerns in Pandemic Influenza Preparation and Responses. Southeast Regional Center of Excellence for Emerging Infectious and Biodefense, 2006. Available online at www.serceb.org/wysiwyg/downloads/pandemic_flu_white_paper.May_25.FORMATTED.pdf.
- 2004 ***Thomas JC**. Skills for the ethical practice of public health. Public Health Leadership Society, 2004. Available online at: <http://phls.org/CMSuploads/Skills-for-the-Ethical-Practice-of-Public-Health-68547.pdf>
- 2002 ***Thomas JC**. Research Ethics in Public Health. In: Jennings B, Kahn J, Mastroianni A, Parker LS. Ethics in Public Health: Model Curriculum. Association of Schools of Public Health and the Hastings Center, 2002. Available online at <http://www.ahttp://phls.org/CMSuploads/Skills-for-the-Ethical-Practice-of-Public-Health-68547.pdfspph.org/educate/#curricula>.
- 1989 **Thomas JC**. VacTrac Users Manual. Pan American Health Organization, 1989. (40 pages; Documents use of a computer program I wrote for PAHO and the Government of Barbados)

- linking vaccination and birth records to assure complete vaccination coverage; hard copy of the computer program is approximately 150 pages.)
- 1980 **Thomas JC.** Manger Pour Vivre. Chicago, Paul Carlson Medical Program, 1980. Nutrition training manual for public health nurses in French-speaking Africa. [French].

Books, Book Chapters, and Book Reviews

- 2019 **Thomas JC,** McNabb S. Principles and ethics of collecting and managing health data. In: Macfarlane SB, AbouZahr C (Eds). Palgrave Handbook of Global Health Data Methods for Policy and Practice. London, Palgrave Macmillan, 2019.
- 2016 **Thomas JC,** Miller R. Codes of Ethics for Public Health. In: Quah S (Ed). International Encyclopedia of Public Health. Oxford: Elsevier, 2016.
- 2015 **Thomas JC,** Miller R. Codes of Ethics for Public Health. In: Caplan M (Ed). Reference Module in Biomedical Sciences. Oxford: Elsevier, 2015.
- Thomas JC.** Public Health Ethics. In: Scutchfield FD, Keck CW, Mays GP (Eds.) Principles of Public Health Practice, 4th Ed. Delmar Cengage Learning, 2015.
- 2009 **Thomas JC.** Public Health Ethics. In: Scutchfield FD, Keck CW, Mays GP (Eds.) Principles of Public Health Practice, 3rd Ed. Delmar Cengage Learning, 2009.
- 2008 **Thomas JC,** Gaare R. Codes of Ethics in Public Health. In: Kirch (Ed.) Encyclopedia of Public Health, Springer, 2008.
- 2004 **Thomas JC,** Eng E, Ackerman S, Earp JA, Ellis H, Carpenter C. Establishing collaborations that engender trust in the prevention of sexually transmitted diseases. In: Roberts AR, Yeager K. Evidence-Based Practice Manual: Research and Outcome Measures in Health and Human Services. New York: Oxford University Press, 2004 .
- 2003 Institute of Medicine. Who Will Keep The Public Healthy? Educating Public Health Professionals in the 21st Century. Washington, DC. National Academies Press, 2003. Chapter 3: The Future of Public Health Education; Ethics. Pages 98-105.
- Thomas JC,** Weber D (Eds). Epidemiologic Methods for the Study of Infectious Diseases. New York: Oxford University Press, 2001. (Second printing in 2003.)
- 2001 **Thomas JC,** Stratton S. Sexually Transmitted Diseases. In: Thomas JC, Weber D (Eds). Epidemiologic Methods for the Study of Infectious Diseases. New York: Oxford University Press, 2001.
- Thomas JC.** Community Intervention Studies. In: Thomas JC, Weber D (Eds). Epidemiologic Methods for the Study of Infectious Diseases. New York: Oxford University Press, 2001.
- Thomas JC.** How to Have Theory in an Epidemic: Cultural Chronicles of AIDS. In Social Science & Medicine 2001;52:1143. (book review)



- 1991 **Thomas JC.** The Geography of AIDS. In *AIDS Ed Prev* 1991. (book review)
- 1990 Chun L, Mascola L, **Thomas JC**, et al. A case-control study of a cluster of perinatal listeriosis identified by an active surveillance system in Los Angeles County, California September 1987-February 1988. In Miller AJ, Smith JL, Somkuti GA (eds.). *Foodborne Listeriosis*. 1990, Society for Industrial Microbiology, pp 75-9.
- 1989 Paolisso M, Baksh M, **Thomas JC.** Relationships between women's agricultural work, caretaking, and infant diarrhea in rural Kenya. In Paolisso M (ed.). *Women, Work and Child Welfare in the Third World*. 1989, Washington, D.C., American Association for the Advancement of Science. Pages 217-36.

Blog Posts

- 2017 Thomas J. "Keeping the balance in how we prevent HIV: Evaluating structural interventions". Blog. *Science Speaks*. Center for Global Health Policy. 5 January 2017. Web.
- 2016 Thomas J. "Health information systems lay the foundation for building from one emergency to the next." Blog. *Science Speaks*. Center for Global Health Policy. 21 March 2016. Web.
- Thomas J. "Health through measurement: countries learn how by listening to each other." Blog. *Health Data Collaborative News*. Health Data Collaborative. 28 April 2016. Web.
- Thomas J. "Getting from Wow to sustainability." Blog. *Knowledge Gateway*, Global Digital Health Network. 27 June, 2016.
- Thomas J. "Resilience: More than a quick fix." Blog. *Investing in Health*, The World Bank. 14 July, 2016.

Invited Presentations

- 2019 Data ethics in population health information systems. Yale US-China Forum, Beijing, China.
- Harnessing the Power of Networks. University of Otago, Wellington campus.
- The Global Emergence of Public Health Ethics. University of Otago, Dunedin campus.
- 2018 Past, present and future of ethics in pandemics. University of North Carolina "Going Viral" Symposium on the 100th anniversary of the 1918 influenza pandemic.
- 2017 Palladium panel discussion of Potential Multi-Project Synergies in Health System Governance. Panel participant
- 2016 Network for Evaluation of One Health annual meeting, University of Copenhagen. Speaker on: MEASURE Evaluation Overview.
- 2015 USAID Bureau of Global Health workshop on Sustainability and Systems Practice. Speaker on: Adapting to Systems: Approaches to Monitoring for Change.
- 2014

	USAID-sponsored conference on Integrating Gender into Indian Health Programs in New Delhi, India. Speaker on: Plenary speaker on "Evaluating gender-based structural interventions."
	International Society for Systems Science annual meeting. Plenary speaker on "Systems Applications in Global Health"
2013	University of North Carolina Board of Trustees. Overview of the MEASURE Evaluation project. University of North Carolina, Office of the Vice Chancellor for Research, annual retreat. Overview of the MEASURE Evaluation project.
2012	FHI360 meeting on Harnessing the Power of Cross-sectoral Programming to Alleviate HIV/AIDS and Food Insecurity. "Organizational networks for food security."
	London School of Tropical Medicine and Hygiene webinar on Structural Interventions.
	Office of HIV/AIDS, United States Agency for International Development, Washington, DC, "Evaluation of Structural Interventions: A Proposed Agenda"
2010	Office of the Global AIDS Coordinator, Washington, DC. "The Power of Organizational Networks."
2009	National Oral Health Conference, St. Louis, MO. Plenary speaker on public health ethics.
	Southeast Public Health Leadership Institute annual meeting, Winston-Salem, NC. "Public health ethics through the lens of an influenza pandemic."
	West Coast Conference on Healthcare Ministry and Missions, Pasadena, CA. "The Community Health Effects of Incarceration."
	World Health Organization meeting on research ethics in public health emergencies. "Guidelines on Ethics in Public Health Emergencies"
	Pandemic Influenza: Are We Out of the Woods? Morehead Planetarium Science Symposia, University of North Carolina.
2008	John Jay College of Criminal Justice, Occasional Series on Re-Entry Research. "The Community Health Effects of Incarceration."
	Annual meeting of the Association of State and Territorial Health Officials (ASTHO) and the National Association of City and County Health Officials (NACCHO). Sacramento, CA. "Ethics in public health emergencies: a case study of the State of North Carolina."
	NC Center for Public Health Preparedness. Country-wide webinar on "Ethics in public health emergencies."
2007	International Disaster Management conference, Orlando Florida. "Ethics in pandemic state flu plans: beyond the usual suspects."
	Pediatric Academic Society annual meeting, Toronto, Canada. "Incarceration and teenage pregnancy."
	World Vision AIDS conference. Acting on AIDS in Africa.

2006

World Vision AIDS conference. Acting on AIDS in Africa.

NC State University, Population Health Seminar Series, "The social epidemiology of infectious diseases"

UNC Program in the Humanities and Human Values, "Adventures in Ideas" series of public lectures. "Ethics in a pandemic."

Centers for Disease Control and Prevention: "The creation of the Public Health Code of Ethics"

Ohio Public Health Leadership Institute. "Public Health Ethics"

Northeast Ohio University College of Medicine grand rounds "Public Health Ethics."

Duke University School of Medicine grand rounds "Ethics in a Pandemic"

2005

American Society of Criminology Annual Meeting, Toronto, Canada. "The community health effects of incarceration."

The Medical University of South Carolina, Epidemiology and Biostatistics Seminar. "The social epidemiology of infectious diseases."

North Carolina Public Health Association Annual Meeting, HIV/STD Section. "Hard time, long drives and good intentions: The role of larger social forces in STD epidemics in North Carolina."

2003

Southeast Public Health Leadership Institute annual retreat. "Is there a public health ethic?"

Association of Ohio Health Commissioners, annual meeting. Closing plenary speaker on public health ethics. Columbus, Ohio.

2002

Centers for Disease Control and Prevention; HIV, STD, and TB Prevention. Seminar on social epidemiology applied to sexually transmitted diseases.

Institute of Medicine, committee on Educating Public Health Professionals for the 21st Century. "Teaching ethics in schools of public health."

Centers for Disease Control and Prevention; HIV, STD, and TB Prevention. Meeting on STD/HIV among women in the non-urban South. "The social context of STD/HIV in rural areas and small towns of the South."

Centers for Disease Control and Prevention; HIV, STD, and TB Prevention. Meeting on Individual and Population Level Approaches to STD Epidemiology and Prevention. "Social forces underlying STD transmission."

University of North Carolina Minority Health Conference. "Is there a relation between rates of incarceration and STDs?"

Centers for Disease Control and Prevention; HIV, STD, and TB Prevention. "Ethics in STD/HIV research."

- American Public Health Association, Forum on Ethics. "Teaching ethics in schools of public health."
- 2001 Association of Teachers in Preventive Medicine, 59th Annual Meeting. Facilitator for session on Community Partnerships to Effect Healthy Sexual Behavior: Lessons Learned. Also delivered a presentation on "A Lay Health Advisor Program to Prevent STDs."
- National Association of City and County Health Organizations. "Developing a code of ethics for public health practice."
- 2000 Association of Schools of Public Health. Meeting on Teaching Ethics in Schools of Public Health. "Teaching on ethics at the UNC School of Public Health."
- University of Virginia, Charlottesville, Program in Bioethics. "Postmodernism and public health ethics."
- 1999 Centers for Disease Control and Prevention, Center for HIV, STD, and TB Prevention. "The conduct of participatory action research."